

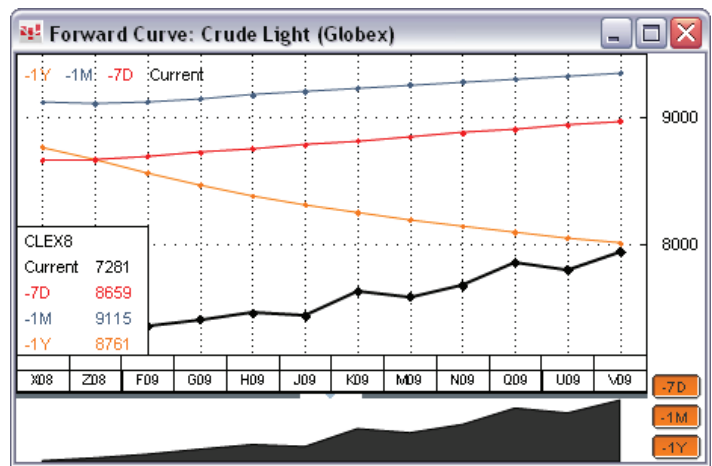
# What's In It For You

## February 2009 | CQG's General Release of 7.9

CQG Integrated Client version 7.9 is available for installation. You should be prompted to download this new version when you log on to CQG IC. If you need assistance, please contact CQG Customer Support at 1-800-525-1085.

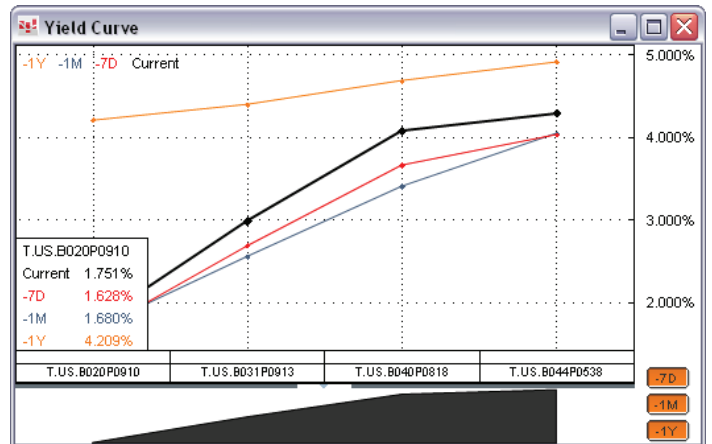
### Forward Curve

Uncover the relationship of instruments in a series by plotting the forward curve of a commodity. See how different delivery months relate to each other and how they have done in the past. CQG plots both real-time and historical data. Recognize hedging opportunities by observing trends for different contract months.



### Yield Curve

Expose potential opportunities by seeing where interest rates are going, observing short-term and long-term inflation patterns, exposing possible economic transitions, and understanding current and past economic and financial market conditions. Identify the correlation between events and market movement. Like it does for the Forward Curve, CQG plots both real-time and historical data.



### Find Out More About...

- Spread Matrix and Spread Pyramid
- Message Center
- XData Studies
- Alert Trading

## Spread Matrix and Spread Pyramid

Define and monitor both synthetic and exchange-traded spreads and trade exchange-traded spreads with CQG's Spread Matrix and Spread Pyramid. CQG offers two one-stop data and trading applications, each designed specifically for the needs of a particular group of traders. The Spread Matrix is ideal for intercommodity, synthetic spreads. You'll benefit from its clean design, a simplicity that belies its sophistication. The Spread Pyramid offers outright, calendar, butterfly, and condor spread strategies in a flexible application that allows you to manage the display. Take advantage of CQG's chart tools, custom studies, portfolio management, and other advanced analytics by combining them with the Spread Matrix and Spread Pyramid in ways that are relevant to you as a spread trader.

		NGEX08	NGEZ08	NGEF09	NGEG09	NGEH09	NGEJ09
		6648 <sub>A</sub>	6935 <sub>A</sub>	7192 <sub>A</sub>	7246 <sub>A</sub>	7134 <sub>A</sub>	7014 <sub>A</sub>
		6644 <sub>B</sub>	6931 <sub>B</sub>	7187 <sub>B</sub>	7239 <sub>B</sub>	7127 <sub>B</sub>	7002 <sub>B</sub>
CLEX08	7528 <sub>A</sub>	-68602 <sub>A</sub>	-68315 <sub>A</sub>	-68058 <sub>A</sub>	-68004 <sub>A</sub>	-68116 <sub>A</sub>	-68236 <sub>A</sub>
	7525 <sub>B</sub>						
CLEZ08	7550 <sub>A</sub>	-68636 <sub>B</sub>	-68349 <sub>B</sub>	-68093 <sub>B</sub>	-68041 <sub>B</sub>	-68153 <sub>B</sub>	-68278 <sub>B</sub>
	7549 <sub>B</sub>	-68842 <sub>A</sub>	-68555 <sub>A</sub>	-68298 <sub>A</sub>	-68244 <sub>A</sub>	-68356 <sub>A</sub>	-68476 <sub>A</sub>
CLEF09	7589 <sub>A</sub>	-68856 <sub>B</sub>	-68569 <sub>B</sub>	-68313 <sub>B</sub>	-68261 <sub>B</sub>	-68373 <sub>B</sub>	-68498 <sub>B</sub>
	7586 <sub>B</sub>	-69212 <sub>A</sub>	-68925 <sub>A</sub>	-68668 <sub>A</sub>	-68614 <sub>A</sub>	-68726 <sub>A</sub>	-68846 <sub>A</sub>
CLEG09	7634 <sub>A</sub>	-69246 <sub>B</sub>	-68959 <sub>B</sub>	-68703 <sub>B</sub>	-68651 <sub>B</sub>	-68763 <sub>B</sub>	-68888 <sub>B</sub>
	7632 <sub>B</sub>	-69672 <sub>A</sub>	-69385 <sub>A</sub>	-69128 <sub>A</sub>	-69074 <sub>A</sub>	-69186 <sub>A</sub>	-69306 <sub>A</sub>

## Message Center

Read and manage all CQG messages in a centralized location. CQG now delivers all messages to you via the Message Center. The Message Center includes error, warning, and information messages that communicate important system information, such as technical issues, scheduled maintenance, connection problems, data delays, updates, and problem resolution. Archive, print, and send messages as well as contact CQG Customer Support directly from the Message Center.

Type	Subject	Received
Warning	Can't open News: incorrect version of Net News Control	6/23/2008 3:03 PM
Warning	Your New Screen Resolution is 1280x770. The Layout May Be Affected.	6/23/2008 3:03 PM
Warning	Your Pages Were Saved at a Screen Resolution of 1280x994.	6/23/2008 3:03 PM
Error	Re: Broadcast Messaging Server connection error	6/23/2008 3:02 PM
Error	Broadcast Messaging Server connection error	6/23/2008 3:02 PM
Error	Re: Broadcast Messaging Server connection error	6/23/2008 3:02 PM
Error	Broadcast Messaging Server connection error	6/23/2008 3:02 PM

## XData Studies

Take advantage of the granularity of markets with good trade activity to analyze your proprietary data down to the millisecond. Use your sub-minute data, either historic ASCII data sets or continuously appended ASCII data sets, and plot three different types of charts: BarXData, CVBXData (constant volume bar), and TFXData (TradeFlow™). These charts provide a historical representation of the data.

## Alert Trading

Incorporate the automation of Alert trading into your trading strategies. CQG has expanded the types of orders supported to include: market, limit, stop, stop limit, trailing limit, iceberg, trailing stop, trailing stop limit, and all DOM-triggered order types. Orders can be triggered based on price, time, and studies and are executed within milliseconds.

## Need to Know News

Need to Know News economic release data is now available in CQG IC. Don't just read economic release data; use that data as it is fed directly to a quote spreadsheet. You can read the stories in CQG News, or better yet, you can view the data as quotes in one of our quote displays. CQG offers pre-designed economic release spreadsheets, which include custom QFormulas that compare data. You can also create your own spreadsheet to monitor, chart, backtest, and trade based on the numbers coming in. Traders using proprietary, automated, and event-trading applications can access the CQG API to import Need to Know News data and route orders back to the exchanges.

Report Description	Actual	Estimate	Revision	Latest	Previous	Actual vs Estimate	Actual vs Previous
<b>Employment Data</b>							
Non-Farm Payrolls	-75000			-84000	-51000	-9000	-24000
Unemployment Rate (%)	570			610	570	40	+40
Average Hourly Earnings (%)	40			40	30	10	+10
Initial Claims	445000	440000	451000	445000	444000	5000	-6000
Continuing Claims	3525000	3460000	3403000	3525000	3435000	65000	+123000
<b>FOMC and Treasury Budget</b>							
Federal Funds Rate (%)	200			200	200	0	0
Discount Rate (%)	225			225	225	0	0
Treasury Budget (Millions)	-107300			-102800	50700	4500	-153000
<b>Consumers &amp; Sales</b>							
Conference Brd Consumer Conf	5300			5690	5190	390	+600
Consumer Credit (Millions)	8600			4600	14300	-4000	-9700
Personal Consumption (%)	20			60	80	40	-20
Personal Income (%)	-20			10	190	30	-180
Retail Sales Rate (%)	-10			-10	10	0	-40
Retail Sales Excluding Autos	50			40	80	-10	-50
Redbook Month Over Month	-160			-80	-160	80	+80
Redbook Weekly Yr Over Yr	230			180	230	-50	-50
<b>International Trade</b>							
Exports (%)	-170	140		-170	140	-310	-310
Exports Ex Agriculture (%)	-70	80		-70	80	-150	-150
Imports (%)	-370	-180		-370	170	-190	-470
Imports Excluding Petroleum (%)	-30	90		-30	90	-120	-120
Imports Incl. Petroleum (%)	-1280	400		-1280	400	-1680	-1680
Trade Balance (Millions)	-62200	-58000	-58800	-62200	-56800	-4200	-3400
Net Long-Term TIC Flows (Millions)	60000			53400	67000	-6600	-13600
Total Net TIC Flows (Millions)	-2500			51100	12300	53600	+38800

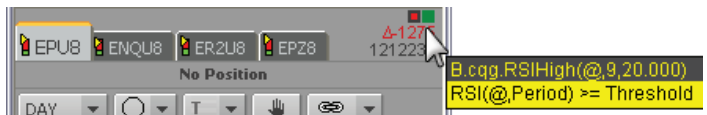
## Study Following Orders

Benefit from the power of integrated technical analysis and trade execution. Combine your analytical expertise with automated order placement to exploit market conditions. CQG introduces Study Following Orders, orders that follow your custom studies. You create the study and perform the technical analysis to monitor market conditions; CQG manages your orders based on those conditions. Whether you trade from the DOMTrader or from a chart or prefer to use standard studies, Study Following Orders are available to you.



## Condition Values on the DOM

Enrich your trading decisions by considering condition values during the decision-making process. Currently, you can monitor condition values on a chart. Continuing our efforts to integrate technical analysis and trading, CQG now allows you to place condition values directly on the DOMTrader.



## Intraday Settlement

Monitor markets where the settlement is not the last trade of the day. CQG now offers three settlement values: most recent, today's, and yesterday's, making it simpler to obtain the settlement price and easier to use that price in custom formulas.

## Contact Us

[www.cqg.com](http://www.cqg.com) | [websales@cqg.com](mailto:websales@cqg.com) | Or call your CQG sales representative

**US** 1-800-525-7082 | **Japan** +81 (0) 3-3286-6633 | **UK** +44 (0) 20-7827-9500 | **Russia** +7 495-795-2410

**France** +33 (0) 1-74-18-07-81 | **Germany** +49 (0) 69-6677-7558-0 | **Singapore** +65 6720-3165 | **Australia** +61 (2) 9235-2009