

CQG Integrated Client Quick Reference Guide

Learn how to log on, set preferences, and place and manage orders.

Logging On

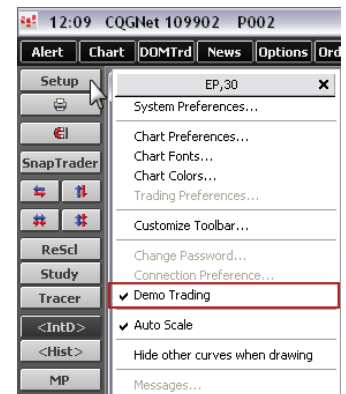
To trade with CQG, you must first log on to CQG IC and then log on to trade. When you log on to trade, you have the option of using our demo system. CQG's demo trading mode allows you to practice trading four instruments: EP, NQM, NQG, and USA. Using our demo system, you can familiarize yourself with how to trade on CQG before logging on to trade for actual accounts.

Logging On to CQG

1. Click **Start**, then point to **All Programs**, **CQG**, **CQGNNet**, and then click **CQG Client**. You can also double-click the CQG icon on your desktop.
2. Type your user name (provided by CQG).
3. Type your password. Your password will be stored.
4. Click the **Login** button.

Logging On to the Trading System

1. Click **More** on the CQG IC application toolbar, and then click **DOMTrader**. The toolbar on the left of the screen expands to include DOMTrader® toolbar options. You can also log on to trade using a different trading application, such as the Order Ticket.
2. Click the **Setup** button on the DOMTrader toolbar.
3. If **Demo Trading** does not have a check mark in front of it, then you will log on to your trading account. Select **Demo Trading** if you want to log on to the demo system.
4. Click the **Login** button on the toolbar.
5. Type your user ID (provided by your FCM).
6. Type your password. The password will not be stored.
7. Click **OK**.



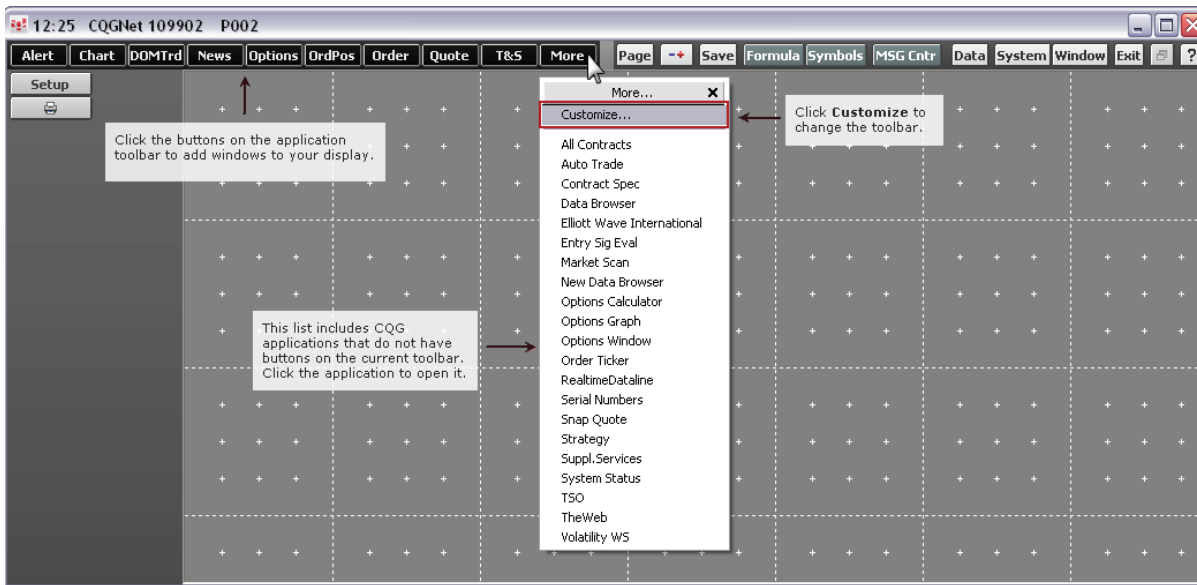
*Note: If you are not prompted for a user ID or password when you click the **Login** button, you are logged into **Demo Trading**. In **Demo Trading**, orders are not sent to the exchange. The title bar of the DOMTrader shows the account you are logged on to. In **Demo Trading** mode, the account will show DEMO and a series of numbers.*

Find Out More About...

- Configuring Your Display
- Setting Trading Preferences
- Entering Orders
- Managing Orders

Configuring Your Display

A clean page is displayed the first time you log on to CQG. Using the buttons on the top toolbar, you can add windows to your display, including Charts, DOMTrader, Orders & Positions, Order Ticket, Quote Board, and Time & Sales. You may have multiple instances of the same window open at one time. To move a window, click the title bar and drag it. To resize a window, click and drag the border. To add or remove buttons on the application toolbar, such as DOMTrader (**DOMTrd**), Order Ticket (**Order**), or Orders and Positions (**OrdPos**), click **More**, and then click **Customize**.



Setting Trading Preferences

Before trading, you may want to set **Display**, **Notifications**, **Risk**, **Limits & Stops**, and **Smart Orders** trading preferences. On the DOMTrader, click the **Setup** button, and then select **Trading Preferences**.

Key Display Preferences

To place orders with a single click, select the **Enable fast-click mode** check box on the **Display** window. For a dynamic price scale, select the **Dynamic scale** button. The current price will stay centered in the DOMTrader window. Fast-click order placement works only with the Dynamic Price Scale.

Order placement methods

Certain methods may be disabled by your FCM

- Enable fast-click mode
- Enable keyboard trading
- Enable sweep mode

Price scale behavior

- Responsive scale
- Dynamic scale

Entering Orders

CQG supports these order types and durations: Day, Fill and Kill, Fill or Kill, Good-till-Cancelled, Manual Fills, Order-Cancels-Order, Stop, Stop Limit, Trailing Stop, and Trailing Stop Limit*. Select the order qualifiers and quantity of your order using the buttons at the top and bottom of the DOMTrader.

*Some of these order types may not be supported by all exchanges.

To place an order:

- Click the buy or sell button.
- Click the buy or sell column (Fast-Click).
- Click and drag a price to the buy or sell column.

Order qualifiers

Recent trade sequence

Sell column

Depth of Market column

Price column

Last Trade column

Buy column

Order icon

Cancel and liquidate buttons

Order quantity buttons

Last Trade	Price	Depth of Market	Order Type
26355	75175		
32394	75150		LMT
25681	75125	926	
22221	75100	802	
21184	75075	836	LMT
29512	75050	542	
38212	75025	197	
3	75000	16	LMT
35641	74975	989	
46877	74950	756	
40543	74925	750	STP
49009	74900	1285	
55433	74875		
58441	74850		STP
49093	74825		
48116	74800		
34170	74775		STP

How to Enter Orders

- **Drag and Drop:** Click and drag a price to the **Buy** or **Sell** column.
- **Fast-Click:** Click a cell in the **Buy** or **Sell** column.
- **Order Buttons:** Click the **Buy** or **Sell** button.

Sweeping the Market

To sweep the market, click a value in the depth of market column and drag it to the **Buy** or **Sell** column. This places an order with a quantity totaling the aggregated depth quantity.

Managing Orders

Click the **More** button on the toolbar, then select **Orders & Positions**. On this window, you can:

- View working, filled, cancelled, exceptions, and parked orders.
- Cancel, replace, and modify orders.
- View your account summary, open position summary, and margin requirements.

Contact Us

www.cqg.com | websupt@cqg.com | Or call your CQG support representative

US 1-800-525-1085 | **Japan** +81 (0) 3-3286-6877 | **UK** +44 (0) 20-7827-8270 | **Russia** +7 495-795-2409

France +33 (0) 1-74-18-07-81 | **Germany** +49 (0) 69-6677-7558-0 | **Singapore** +65 6720-3165 | **Australia** +61 (2) 9235-2009