

# CQG Trader

# Quick Reference Guide

**Learn how to log on, set preferences, and manage orders.**

## Logging On to the Demo System

CQG Trader's demo trading mode allows you to practice trading four instruments: EP, NQM, NQG, and USA. Using our demo system, you can learn how to trade on CQG before trading actual accounts.

1. Click **Start**, point to **All Programs, CQG, CQG Trader**, and then click **CQG Trader**. You can also double-click the CQG Trader icon on your desktop.
2. Type your demo user name.
3. Type your demo password, which you received in an e-mail.
4. Select the **Demo the system** check box.
5. Click **Logon**.

## Logging On to the Trading System

1. Click **Start**, then point to **All Programs, CQG, CQG Trader**, and then click **CQG Trader**. You can also double-click the CQG Trader icon on your desktop.
2. Type your user name.
3. Type your password.
4. Verify that the **Demo the system** check box is clear.
5. Click **Logon**.

## Configuring Your Display

CQG Trader opens with the DOMTrader, Quote Board, and Orders and Reports displayed.

### Resizing a Window

You can resize the DOMTrader or Order Ticket, the Quote Board, and Orders and Reports. Resizing one window automatically resizes the other windows. To resize the DOMTrader or Order Ticket, hover your mouse over the vertical window border until the cursor changes from an arrow. Drag the resize cursor from left to right. To resize the Quote Board and Orders and Reports, hover your mouse over the horizontal window border until the cursor changes from an arrow. Drag the resize cursor from top to bottom.



### Adding a DOMTrader or an Order Ticket

- To add a DOMTrader, click **View** on the menu bar, and then click **Add DOMTrader view**.
- To add an Order Ticket, click **View** on the menu bar, and then click **Add Order Ticket view**.

You can have either the DOMTrader or the Order Ticket displayed at one time.

## Find Out More About...

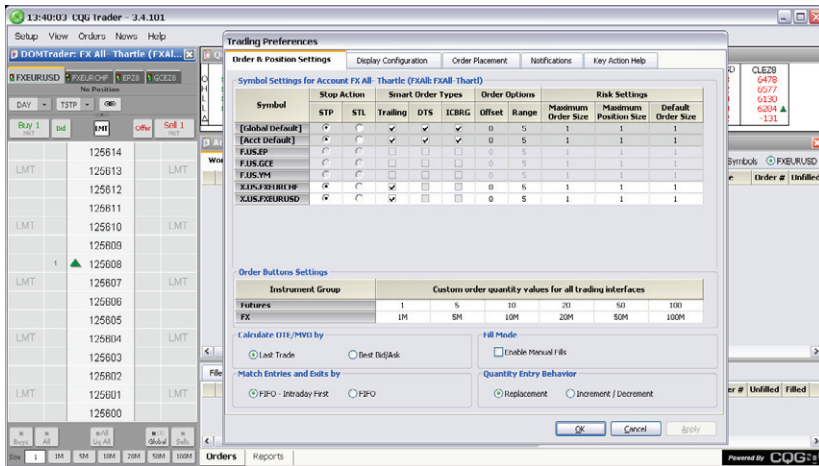
- Closing a Window
- Setting Preferences
- Entering Orders
- Managing Orders

## Configuring Your Display (continued)

### Closing a Window

Click the button on the upper-right corner. You can close a DOMTrader or Order Ticket only if you have more than one open.

## Setting Preferences



### Order & Position

1. Click **Setup** on the menu bar.
2. Click **Preferences**. The Trading Preferences window opens.
3. Click the **Order & Position Settings** tab.
4. In the **Order Buttons Setting** area, select the values for the quantity buttons. If you would like to be able to enter manual fills, select the **Enable Manual Fills** check box.

### Order Placement

1. Click the **Order Placement** tab.
2. Select the check boxes for the columns and buttons you want to add to the DOMTrader, such as recent trade sequence.

For a dynamic price scale, select the **Dynamic Price Scale** button. The current price stays centered in the DOMTrader. Fast-click order placement works only with the Dynamic Price Scale. For placing orders with a single click on the DOMTrader, select the **Enable Fast-Click** check box. You can also switch from the DOMTrader to the Order Ticket on this window.

### Display

1. Click the **Display Configuration** tab.
2. Add cancel or liquidate buttons to the DOMTrader by selecting the **Enable liquidate and reverse buttons** check box.
3. Use the **Order Display Columns** drop-down menu to add or remove columns from a particular **Orders** tab.

### Notifications

1. Click the **Notifications** tab.
2. Select the confirmation and notification messages you wish to receive.
3. Click **OK** to save your changes.

## Entering Orders

Select the order qualifiers and quantity of your order using the buttons at the top and bottom of the DOMTrader. CQG supports these order types and durations: Day, Fill and Kill, Fill or Kill, Good-till-Cancelled, Manual Fills, Order-Cancels-Order, Stop, Stop Limit, Trailing Stop, and Trailing Stop Limit. (Some of these order types may not be supported by all exchanges.)

### How to Place Orders

- **Drag and Drop:** Click and drag a price to the **Buy** or **Sell** column.
- **Fast-Click:** Click a cell in the **Buy** or **Sell** column.
- **Order Buttons:** Click the **Buy** or **Sell** button.

To place an order: Click the buy or sell button.

Click the buy or sell column (Fast-Click).

Click and drag a price to the buy or sell column.

Order qualifiers, manual fills button, and OCO button

Recent trade sequence

Order icons

Sell column

Depth of Market Column

Price Column

Last Trade Volume

Buy Column with Stop/Limit watermarks

Cancel and liquidate buttons

Quantity buttons

## Managing Orders

The **Working Orders** window displays all of your open orders. From this window, you can convert orders to OCO, replace orders, and cancel orders.

Working Orders													Show Orders: <input checked="" type="radio"/> All Symbols <input type="radio"/> EPH7			
			B/S	Qty	Symbol	Order Price	Fill Price	Type	Limit Price	Limit	Order ID	Place Time	Order #	Unfilled	Filled	Status
		CXL	RPL	Buy	1	EPH7	141975		LMT		2190248	1/9/2007 3:56 PM	SC34__2	1	0	Working
		CXL	RPL	Sell	1	EPH7	142350		LMT		2190247	1/9/2007 3:56 PM	SC33__2	1	0	Working

The **Orders** tab at the bottom of the window includes filled, parked, cancelled, and exceptions order information.

Filled													Parked			Cancelled			Exceptions		
Activate All													Activate All Buys			Activate All Sells			Cancel All		
			B/S	Qty	Symbol	Order Price	Fill Price	Type	Limit Price	Order ID	Park Time	Order #	Unfilled								
			Buy	1	EPH7	142100		LMT		2190702	1/9/2007 4:06 PM	SC36__4	1								

The **Reports** tab includes **Open Positions**, **Purchases & Sales**, and **Account Summary** windows.

Open Positions											Purchases & Sales			Account Summary		
				Date	Symbol	Long	Short	Currency	Price	OTE	UPL	MVO				
			X		CLEG7	1		USD	6049	(4,710.00)						
			X		ENQH7	2		USD	177825	1,310.00						
			X		EPH7	2		USD	142100	0.00						
			X		NQMG7	1		USD	55775	0.00						

## Contact Us

[www.cqg.com](http://www.cqg.com) | [websupt@cqg.com](mailto:websupt@cqg.com) | Or call your CQG support representative

US 1-800-525-1085 | Japan +81 (0) 3-3286-6877 | UK +44 (0) 20-7827-8270 | Russia +7 495-795-2409

France +33 (0) 1-74-18-07-81 | Germany +49 (0) 69-6677-7558-0 | Singapore +65 6494-4911 | Australia +61 (2) 9235-2009