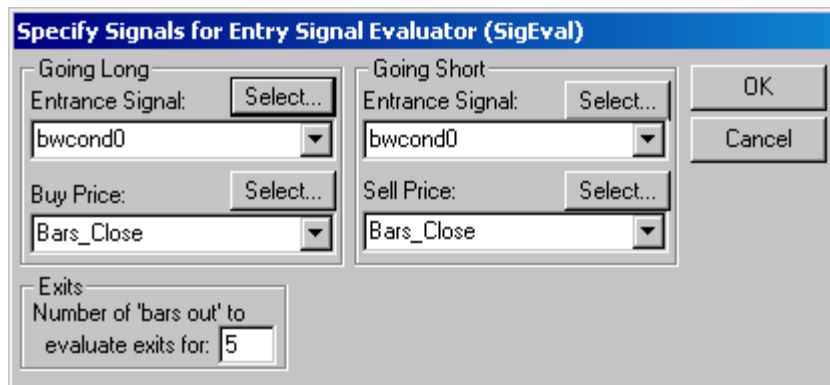


Changing the Short and Long Entry Signals

You can change the short and long entry signals without re-doing the entire Signal Evaluation setup. Click the **Signals** button.



To select a new Going Long Entrance Signal

1. Click the **Select** button.
 - Or
 2. Click the **Going Long Entrance Signal** drop-down list button.
 3. Select an **Entrance Signal**.
 4. Select a **Buy Price** from the drop-down list.
- Choices include **Bars_ Close** and **Next_ Bar's_ Open**.

To select a new Going Short Entrance Signal

1. Click the **Select** button.
- Or
2. Click the drop-down list button.
3. Select an **Entrance Signal**.
4. Select a buy price from the drop-down list of available prices.
5. Choices include **Bars_ Close** and **Next_ Bar's_ Open**.

In addition to allowing you to select new **Going Long** and **Going Short** signals and prices, the **Specify Signals for** window allows you to select a new evaluation period by entering a new number in the Number of bars out to evaluate exits for box. The maximum "Bar Out" size is 500.