

# Optimize Your CQG Experience

**January 2010 | Performance-improving tips for traders**

## Introduction

CQG recognizes the problems caused for traders by decreased system performance. To better serve our customers, we have prepared the following checklist of performance-improving tips.

## Does your computer meet these system requirements?

These specifications are appropriate for single and dual monitor setups. If you have three or four monitors, you will need a better processor, video card, and network connection. Hardware should

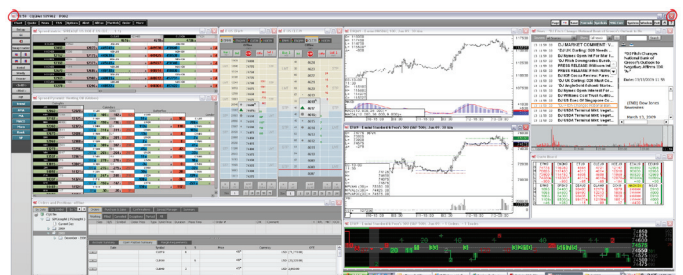
be upgraded on a regular basis. You should also ensure that CQG is excluded from all firewall and virus checks.

<b>Processor</b>	Dual-Core. Intel® Core™2 Duo (2.33 Ghz or better) suggested. Quad-Core recommended.
<b>Operating System</b>	Windows® 7, Windows Vista, or Windows XP. Windows 2000 is not supported.
<b>Memory</b>	2GB RAM. 4GB recommended for Vista and Windows 7.
<b>Hard Drive</b>	160GB, IDE-100, 7200RPM with 4GB of free hard disk space. 320GB with 6GB-10GB free hard drive space recommended.
<b>Video Card</b>	Dual-port graphics adapter with 128Mb of memory, 64Mb per port. 256Mb recommended with 128Mb per port supporting Direct X version 9.x.
<b>System Setting Specifications</b>	Hibernate and stand by modes cannot be used on a system running CQG IC. Hard drive power-saving features should also be disabled.
<b>Internet Access</b>	Internet service via a high-speed connection, such as DSL, cable, or fixed wireless/wireless local loop (WLL). Wireless Internet connections are not recommended, especially broadband over a Wi-Fi card. Dial-up is not supported.

For detailed technical specifications, visit [www.cqg.com/Support/Customer-Education.aspx](http://www.cqg.com/Support/Customer-Education.aspx).

## Are you stretching a CQG page over multiple monitors?

Do you have one page stretched over multiple monitors instead of one page per monitor? To check, look at the title bar at the top of the CQG window. In the picture to the right, the title bar is stretched across two monitors. You can tell because the CQG icon is on the left monitor and the close button is on the right. Each monitor should have a CQG icon on the left and the close button on the right. If your monitors look like this picture, you should resize the window. Click and drag the corner of the window until it is displayed on one monitor only.



## How complex are the pages you have displayed?

Complex charts, including custom sessions and custom studies, require additional system resources. If you are using complex charts, try to make changes in other areas, such as modifying your recalculation mode or closing unused applications. Be aware that

condition alerts and trading system alerts use more resources than other alerts. You should turn off alerts that you are not using to cut down on CPU usage. If you are opening a continuation chart with the maximum compression settings, the display time may be affected.

## How many CQG windows do you have open?

Note the number of open and minimized windows, and close any that are unnecessary. To see how many windows you have open, click the **Window** button on the CQG IC toolbar.

You can also right-click the **Window** button to open an extensive menu of window options, including arranging windows.

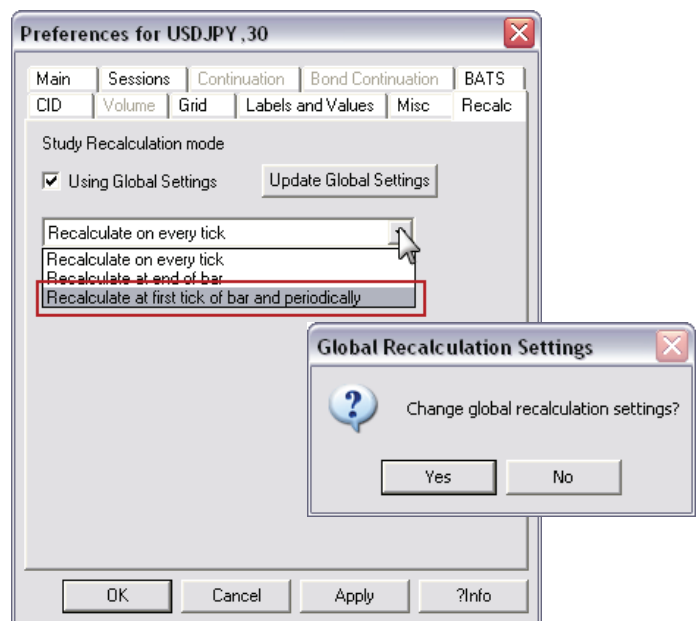
## What recalculation mode are you using?

If you have the system set to recalculate on every tick, the recalculation uses a significant amount of processor capacity.

We recommend that you select **Recalculate at first tick of bar and periodically**.

To change your setting, go to the **Recalc** tab in **Chart Preferences**.

Clicking **Yes** on the Global Recalculation Settings applies this change to Custom QuoteBoards, Market Scans, Signal Evaluators, and Trading System, Condition, and Study Alerts. Clicking **No** applies the change only to the current chart.



## What other software applications do you have open?

Each open application draws on system resources, even if you are not using it. Applications that share the Internet connection can be especially problematic. To see how many applications

are open, check your status bar, typically at the bottom of your computer screen. If you have several applications open like the image below, then you may want to close some of them.



## Contact Us

[www.cqg.com](http://www.cqg.com) | [websales@cqg.com](mailto:websales@cqg.com) | Or call your CQG sales representative

**US** 1-800-525-7082 | **Japan** +81 (0) 3-3286-6633 | **UK** +44 (0) 20-7827-9500 | **Russia** +7 495-795-2410

**France** +33 (0) 1-74-18-07-81 | **Germany** +49 (0) 69-6677-7558-0 | **Singapore** +65 6494-4911 | **Australia** +61 (2) 9235-2009