

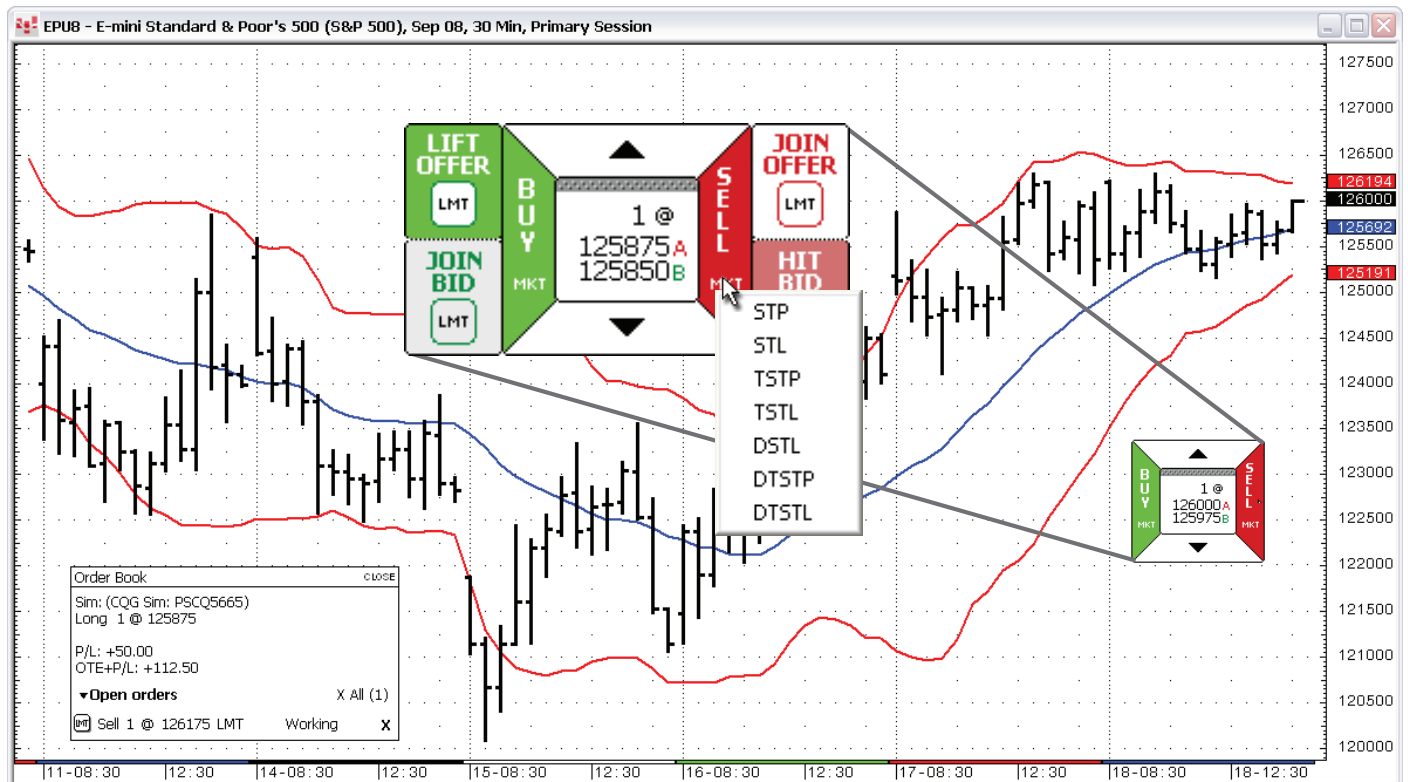
SnapTrader®

Trade directly from CQG Charts.

Introduction

CQG's innovative order entry interface, SnapTrader, allows users to trade directly from a chart. Traders can place the SnapTrader anywhere on a CQG Chart and drag the tool to additional charts as

trading unfolds. The SnapTrader is designed to provide one-click trading and eliminate the need for order routing interfaces, which increases screen space.



The SnapTrader flyouts appear when you move the mouse over the **Buy** and **Sell** market buttons. Green indicates buy orders, and red indicates sell orders.

Benefits and Features

- View the inside market.
- Trade multiple markets by adding a SnapTrader to each chart.
- Use along with the Order Book to manage orders and positions.
- Open the flyouts to view detailed order types.
- Select stop order and limit order types from the flyouts.

Order Types

- DOM-Triggered Stop
- DOM-Triggered Trailing Stop
- DOM-Triggered Trailing Stop Limit
- Limit
- Market
- Stop
- Stop Limit
- Trailing Limit
- Trailing Stop
- Trailing Stop Limit

Contact Us

www.cqg.com | websales@cqg.com | Or call your CQG sales representative

US 1-800-525-7082 | **Japan** +81 (0) 3-3286-6633 | **UK** +44 (0) 20-7827-9500 | **Russia** +7 495-795-2410

France +33 (0) 1-74-18-07-81 | **Germany** +49 (0) 69-6677-7558-0 | **Singapore** +65 6720-3165 | **Australia** +61 (2) 9235-2009