

CQG Trend

September 2009 Newsletter

New this month from CQG:

- Updated CQG IC User Guides
- CQG, ICE®, and Progress® Apama® Live Trading Demo in New York
- Stock Indices Component Pac
- CQG Spreader Pages Coming Soon
- CBOT 30-Year Tick Size Change
- New CME Globex Weekly Options
- Follow CQG on Twitter and Facebook
- New Exchange Connectivity
- Visit CQG at FIA 2009 Expo

Quick Tip: CQG Spreader Orders

Traders can place a spread order with the CQG Spreader the same way a non-spread order is placed. To place a spread order:

1. Enter the spread symbol on the DOMTrader®. The background color of the DOMTrader changes for each spread.
2. Enter the leg ratio. The DOMTrader background color changes again.
3. Click **Legs** to open a DOMTrader for each spread leg.
4. Click the working leg menu drop-down arrow.
5. Click **Set up parameters**. The trading parameters window opens.
6. Choose which legs to work, the order type, volume ratio, and incomplete order behavior.
7. Click **Apply** and close the window.

Updated CQG IC User Guides

Learn how to use the latest CQG IC features by viewing the updated user guides.

Documents include:

- CQG Basics
- Charting and Studies
- Advanced Analytics
- Trading on CQG IC
- Options

View the [CQG IC user guides](#) to learn more.

Live Trading Showcase in New York

Execute any trade system, condition, or study automatically. Join CQG, ICE, and Progress Apama for a live demonstration of the integration of CQG's state-of-the-art tools with Progress Apama's market-leading platform for algorithmic trading. The demonstration will feature trading the unique products of the IntercontinentalExchange.

- September 17th
- 4:00 p.m. EDT. Demo begins at 4:30 p.m.
- Grand Hyatt New York, 109 E. 42nd St., at Grand Central Terminal

All those attending will be eligible for a free two-week trial of CQG and Progress Apama. Free drinks and hors d'ourves will be offered. To RSVP, e-mail rsvp@cqg.com or call 212-809-6100.

Stock Indices Component Pac

Download the [Stock Indices component pac](#) for trading and analytics. This component pac allows you to import customized stock portfolio pages as of August 2009 into your CQG IC, including:

- Dow Jones Industrial Average
- NASDAQ-100
- NASDAQ Composite
- S&P 500

Coming Soon: CQG Spreader Pages

To help customers start trading with the CQG Spreader, CQG will offer a new group of pages, titled Spreader, in version 8.1. The CQG Spreader, CQG's latest order routing tool, offers spread traders sophisticated order management and ultra-low latency trade execution.

With the CQG Spreader, traders can:

- access the CQG Spreader Core, our exchange-collocated servers;
- easily create, trade, and manage multi-legged, intramarket, intermarket, and cross-exchange spreads; and
- effectively manage incomplete orders.

The eleven Spreader pages will provide examples of spread order routing, including:

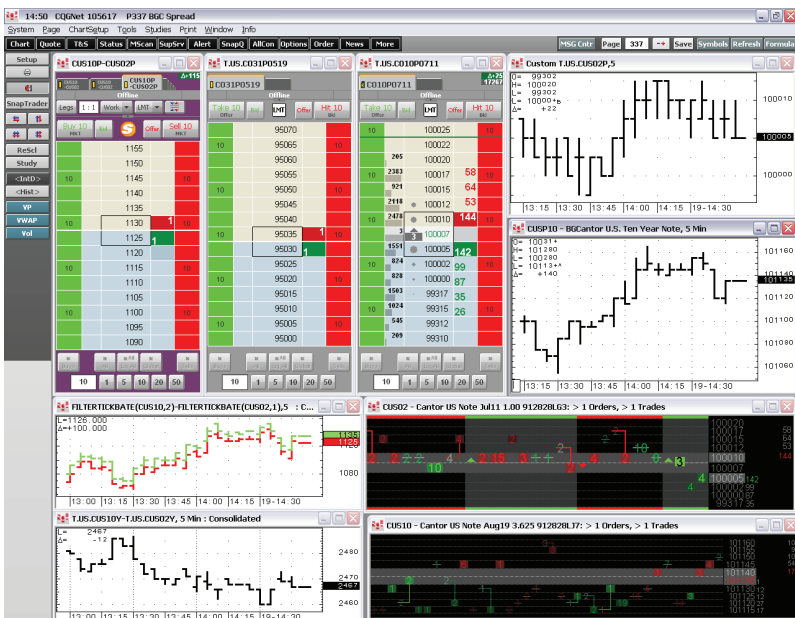
- Synthetic calendar spreading
- Intercommodity spreading

- Stock index spreading
- U.S. Treasury basis spreading
- U.S. Treasury curve spreading
- Energy cross-exchange spreading

The pages will also include examples of CQG analytics set up for spreading, such as:

- tracking the synthetic spread best bids and asks on a chart;
- applying TradeFlow™ charting and pre-trade analytics to exchange-traded spreads; and
- establishing order tickers to track traders' actions in the order books for the outright legs.

To learn more or to get started, [contact your CQG Sales Representative.](#)



CQG Integrated Client: The upcoming Spreader pages will include spread order routing examples, such as U.S. Treasury basis spreading, shown above, to help customers get started with the CQG Spreader and apply CQG charting and analytics to their spread trading strategies.

CBOT 30-Year Tick Size Change

The Chicago Board of Trade has adjusted the minimum tick size and minimum tick value for the 30-year U.S. Treasury outright bond futures, which affect the following CQG symbols:

- US
- USA
- USAA

CBOT is now quoting the U.S. Treasury bonds in full 32nds with a minimum tick value of \$31.25.

The DOMTrader price scale changes are:

- 120'160
- 120'150
- 120'140
- 120'130
- 120'120

New CME Globex Weekly Options

CQG customers can now access weekly options on standard and e-mini S&P 500 futures on Globex.

The weekly options allow traders to capitalize on market activities in the first half of the month.

The CQG symbols are:

- EV1: S&P 500 Week 1 Options
- EV2: S&P 500 Week 2 Options
- EW1: E-Mini S&P 500 Week 1 Options
- EW2: E-mini S&P 500 Week 2 Options

Visit the [CME Group Web site](#) to learn more.

Follow CQG on Twitter and Facebook

Get the latest CQG news, and keep informed of market-moving events and

updates by following CQG on Twitter and Facebook. Register for CQG seminars and events, and network with fellow traders. To follow CQG, visit our Twitter page at www.twitter.com/cqginc or our Facebook page at <http://companies.to/cqg/>.

CQG Adds Connection to NYSE Euronext Brussels and Amsterdam

CQG customers who clear through J.P. Morgan now have direct connectivity to the NYSE Euronext Brussels and Amsterdam exchanges.

Visit www.cqg.com/fcmpartners for a full list of CQG's Futures Commission Merchant partners and their connecting exchanges.

Visit CQG at FIA 2009 Expo

CQG will be exhibiting at the [2009 FIA Futures & Options Expo](#) in Chicago. Join us on October 21st - 22nd at the Hilton Chicago to learn about the latest CQG products and features.

Questions? Contact us:

Web: www.cqg.com

E-mail: websales@cqg.com

Call your CQG sales representative:

US: 1.800.525.7082

UK: +44.20.7827.9500

Australia: +61.2.9235.2009

France: +33.1.74.18.07.81

Germany: +49.69.6677.7558.0

Japan: +81.3.3286.6633

Russia: +7.495.795.2410

Singapore: +65.6720.3165

Disclaimer: Trading and investment carry a high level of risk, and CQG, Inc. does not make any recommendations for buying or selling any financial instruments. We offer educational information on ways to use our sophisticated CQG trading tools, but it is up to our customers and other readers to make their own trading and investment decisions or to consult with a registered investment advisor.